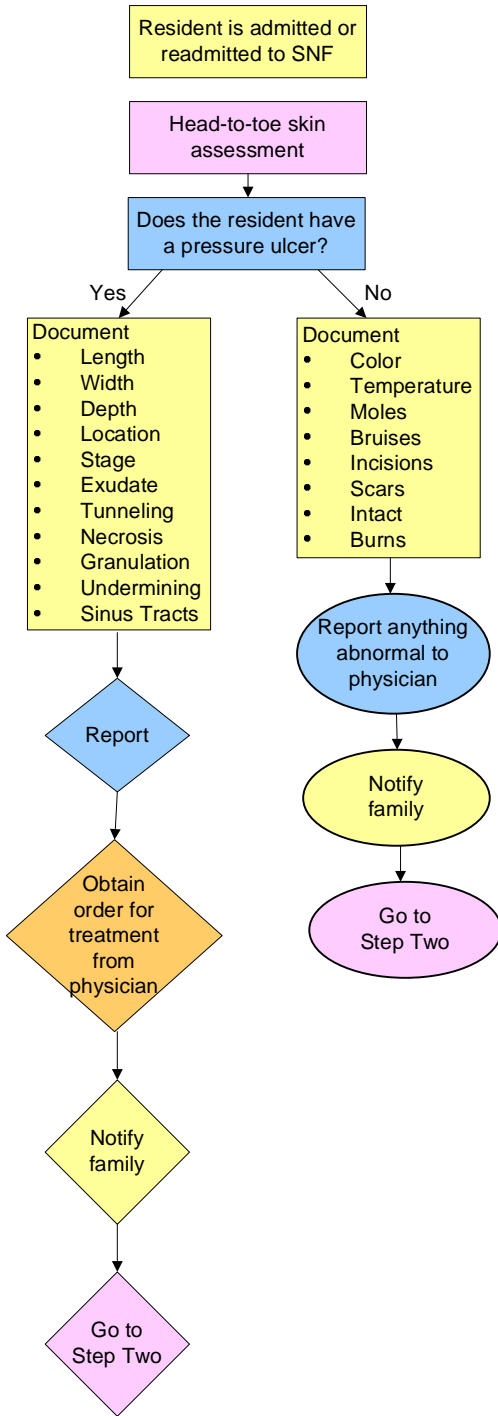


# Pressure Ulcer Prediction, Prevention, and Treatment Pathway

## Step One: Assess skin condition



**Remember: If a resident is at risk or has a pressure ulcer, repeat Step One on a weekly basis.**

Remember to measure the skin abnormalities

## Step Two: Complete risk assessment to identify risk factors and care plan interventions. Perform Step Two at least every 90 days and with any significant change. Adjust care plan as needed.

